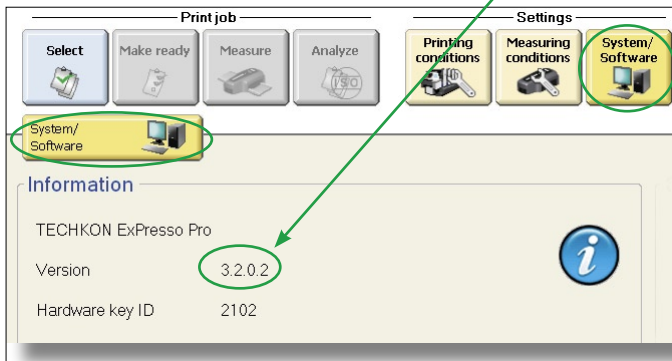


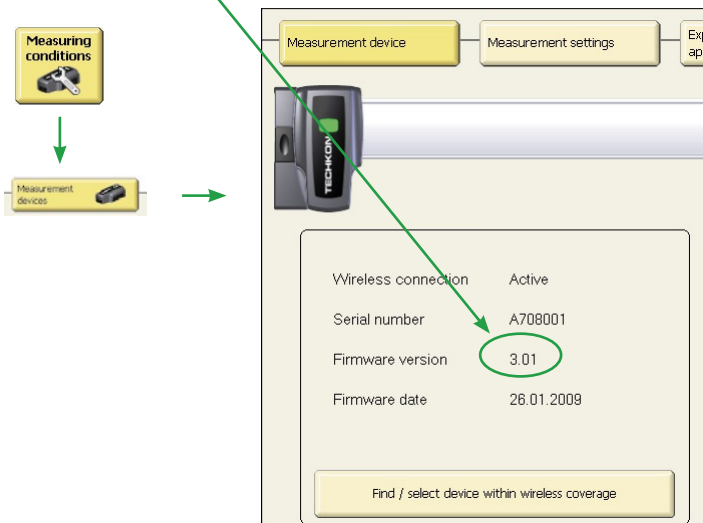
Instructions for Updating the Firmware of SpectroDrive

The scan-measurement device SpectroDrive and the USB-module for wireless data transmission are micro-processor controlled and run by an operating system with a special firmware. New functions and modifications result in new firmware versions, which can be uploaded to the measurement device and the USB-module.

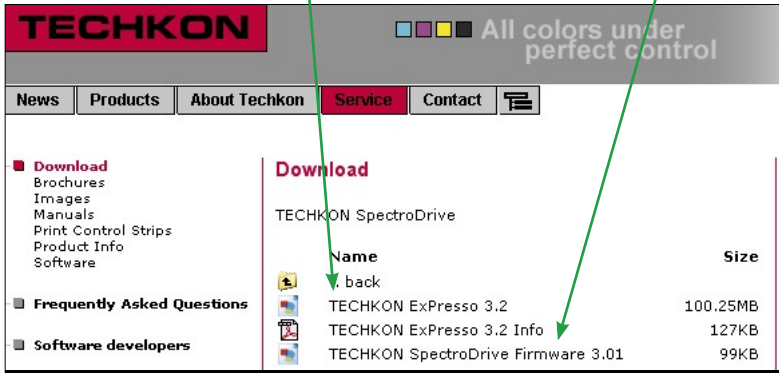
- The firmware-update is carried out with the **Windows-Software ExPresso 3**. First, please validate, that the newest version of ExPresso is installed on your PC. Here you can check the version number:



- Also, the firmware of SpectroDrive (includes the firmware of the USB-module) can be checked:



- At the download area of the TECHKON website at www.techkon.com the new versions of the TECHKON ExPresso 3 software and SpectroDrive firmware can be downloaded free of charge:



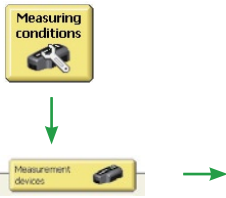
- First, deinstall the old ExPresso software, then install the new version of ExPresso 3 and start it (at least version 3.2.02 is required!).

Important! The following measures have to be taken, in order to upload the firmware successfully:

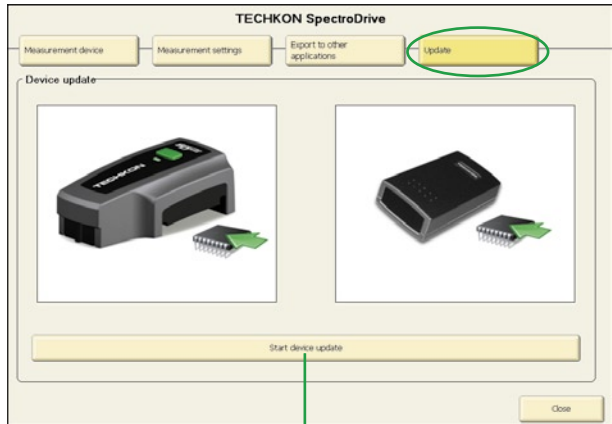
- The USB-module has to be operated with the supplied USB-cable and has to be positioned close to the measurement system in an angle as indicated on the image on the right.
- SpectroDrive has to be parked in the left home position on the track. The LED will flash in green. The AC-adapter has to be connected to the system.
- All devices in the room with Bluetooth oder WLAN wireless connections should be turned off. Other SpectroDrive devices or USB-modules have to be deactivated (the USB-plug has to be pulled from other USB-modules).
- On the PC only the ExPresso 3 Software has to run. Programs running in the background have to be deactivated.



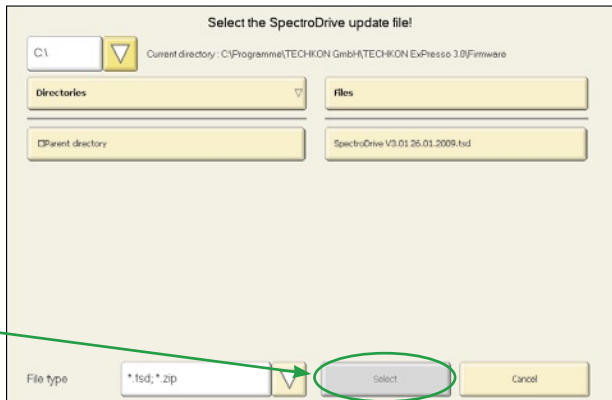
Now, launch the firmware update procedure within the ExPresso software:



The firmware will be uploaded in SpectroDrive and the USB-module simultaneously.



Select the firmware file, which you have downloaded from the internet and stored temporarily on your PC.



Now you can start the update process.

Important !

The update process may take several minutes. During this interval, the data transmission must not be interrupted. Neither the software nor the measurement system are to be used during the update process. Otherwise important data within the measurement device might be lost.

If you have further questions, please contact us.